

Longleat Walk



First floor apartment within 'smaller block'

Secure intercom access, and allocated parking bays

Generous lounge with open-plan, modern fitted kitchen

Newly carpeted and ready to move-into

Available with 'No Forward Chain'

£89,995



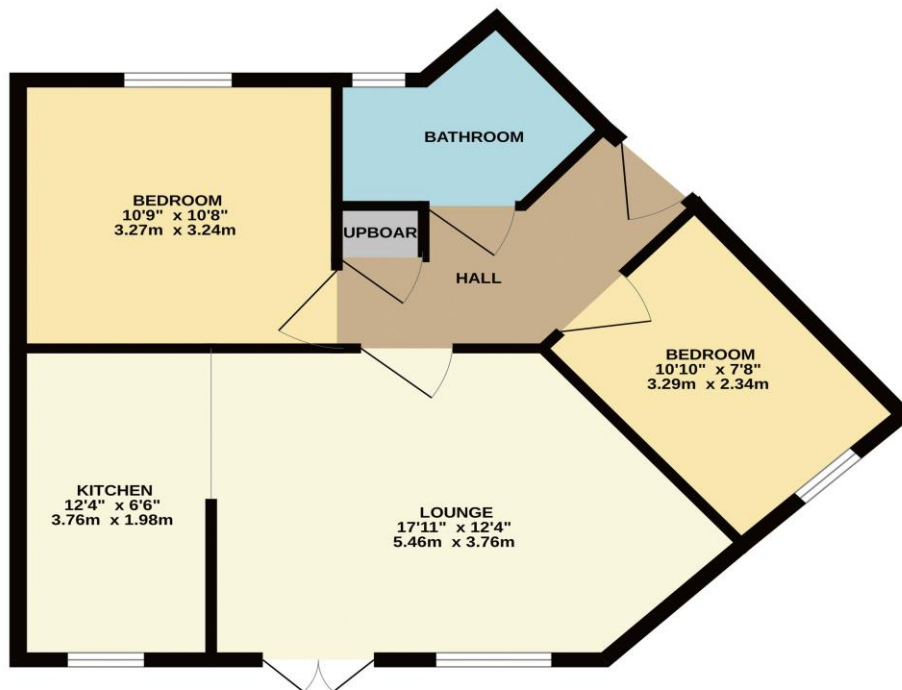
Multi-Award Wining



Located within this purpose built, 'smaller bock' and situated on the first floor, this attractive apartment is available with 'No Forward Chain', being close to fantastic local amenities, within the 'heart' of Ingleby Barwick, and being of particular interest to the first time purchaser, or those seeking an ideal 'buy to let'. Benefitting from secure, intercom access, and with rear allocated parking bays, and additional visitor bays.

Newly carpeted throughout, and ready to move-into, the internal accommodation that comprises an entrance hall, spacious lounge which is open-plan to the modern fitted kitchen, two good bedrooms and the separate bathroom.

GROUND FLOOR



Whilst every attempt has been made to ensure the accuracy of the floorplan contained here, measurements of doors, windows, rooms and any other items are approximate and no responsibility is taken for any error, omission or mis-statement. This plan is for illustrative purposes only and should be used as such by any prospective purchaser. The services, systems and appliances shown have not been tested and no guarantee as to their operability or efficiency can be given.
Made with Metropix ©2023



“The Ingleby Barwick Experts”



Tenure: Leasehold

Council Tax Band: B



AGENTS NOTE: Every care has been taken with the preparation of these details, but they are for general guidance only. Measurements and dimensions are approximate, and any fixtures or fittings shown in photography does not infer that they are to be included within the sale. The agent has not tested any appliances or supplies and professional verification of these should be sought prior to purchase if required. These particulars do not constitute a contract or part of a contract.